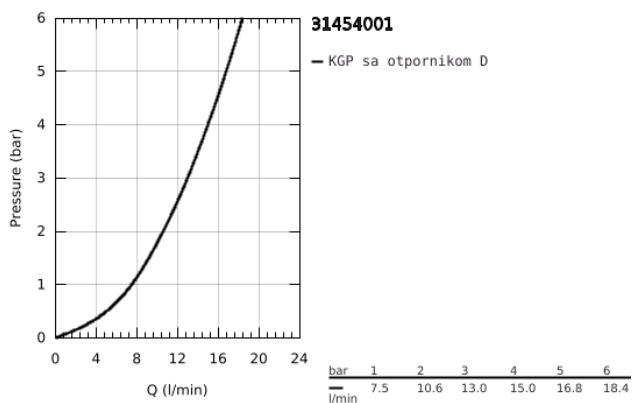
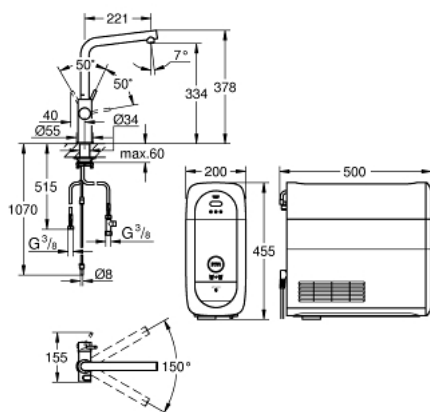


31 454 001 GROHE BLUE HOME L-SPOUT STARTER KIT



PRODUCT DESCRIPTION (1/2)

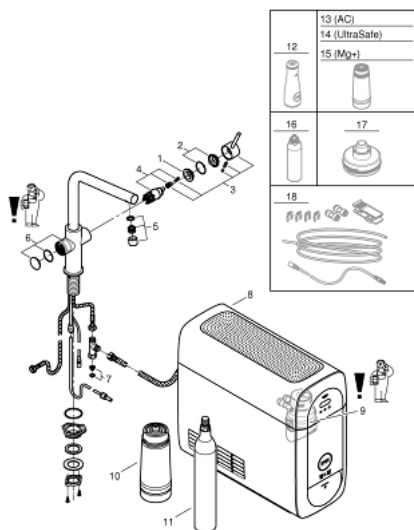
- Colour: chrome
- sastoji se od:
 - GROHE Blue Home single-lever sink mixer with filter function
 - instalacija na 1 otvor
 - L-izlivna cev
 - push buttons for 3 types of filtered and chilled table water
 - negazirana, srednje gazirana, jako gazirana voda
 - GROHE Long-Life premaz
 - GROHE SilkMove keramički mešač 28 mm
 - cevasta izlivna cev
 - područje rotacije 150°
 - odvojene unutrašnje cevi za filtriranu i vodovodnu vodu
 - fleksibilna spojna creva
 - GROHE Blue Home cooler
 - delivers 3 liters of chilled sparkling water per hour
 - jedinica za hlađenje 180 W, 230 V, 50 Hz
 - sound level in standby 44 dB(A)
 - tip zaštite IP 21
 - CE odobrenje
 - requires ventilation holes in the bottom of the kitchen cabinet
 - software set-up and monitoring of filter and CO₂ capacity possible via GROHE Watersystems app
 - push notifications at low filter resp. CO₂ capacity
 - with Bluetooth 4.0* and Wi-Fi interface for wireless data communication
 - for Apple** and Android devices
 - Bluetooth raspon (10 m) zavisi od materijala i debljini zidova između odašiljača i prijemnika
 - GROHE Blue filter S-Size and filter head with flexible water hardness adjustment for regions with water hardness of more than 9° dKH
 - for regions with water hardness below 9° dKH please order activated carbon filter 40 547 001

31 454 001 GROHE BLUE HOME L-SPOUT STARTER KIT

PRODUCT DESCRIPTION (2/2)

- compatible with GROHE Blue filter S-Size, M-Size, GROHE Blue activated carbon filter, GROHE Blue Ultrasafe filter and GROHE Blue magnesium+ filter
- GROHE Blue 425 g CO₂ bottle
- System requirements Apple iPhone with iOS 14.0 or higher System requirements Android smart phone with Android 10.0 or higher Mobile devices and GROHE Watersystems App*** are not included in delivery and have to be ordered separately via an authorised Apple store/store/iTunes or Google Play store.* The Bluetooth word mark and logos are registered trademarks owned by Bluetooth SIG, Inc. and any use of such marks by Grohe AG is under license. Other trademarks and trade names are those of their respective owners.** Apple, the Apple logo, iPod, iPod Touch, iPhone and iTunes are trademarks of Apple Inc., registered in the U.S. and other countries. Apple is not responsible for the function of this device or its compliance with safety and regulatory standards.*** Available for free via iTunes app or Google Play store.
- This product includes an article which is declared as a hazardous substance. Find more information in the safety data sheet. You can download the safety data at: www.grohe.com/safety-data-sheets/
- for Belgium only: to be equipped with a non-return valve EA approved by Belgaqua

31 454 001 GROHE BLUE HOME L-SPOUT STARTER KIT



SPARE PARTS, април 2017 – now

- 1: Prsten armature (Spare part-nr. 07419000)
- 2: Poklopac (Spare part-nr. 46581000)
- 3: Ručica (Spare part-nr. 46957000)
- 4: Mešač (Spare part-nr. 46580000)
- 5: Perlator (Spare part-nr. 48194000)
- 6: Operating unit (Spare part-nr. 46958000)
- 7: Filter za nečistoću (Spare part-nr. 47576000)
- 8: Cooler (Spare part-nr. 40711001)
- 9: Glava filtera (Spare part-nr. 48344000)
- 10: Filter S-Size (Spare part-nr. 40404001)
- 11: Starter kit 425 g CO₂ bottles (4 pieces) (Spare part-nr. 40422000)
- 12: Stakleni bokal (Spare part-nr. 40405000)*
- 13: Aktivni karbonski filter (Spare part-nr. 40547001)*
- 14: Filter (Spare part-nr. 40575001)*
- 15: Magnesium+ filter (Spare part-nr. 40691001)*
- 16: Mešač za prečišćavanje (Spare part-nr. 40434001)*
- 17: Cleaning cartridge adapter (Spare part-nr. 40694000)*
- 18: Produžni set (Spare part-nr. 40843000)*

* Optional accessories